



THE UNIVERSITY OF NEW MEXICO • HEALTH SCIENCES CENTER  
**UNM HOSPITALS**

# **Bernalillo County Commissioner Report**

**December 31, 2015**



THE UNIVERSITY OF NEW MEXICO • HEALTH SCIENCES CENTER

**UNM HOSPITALS**

## Index

	<b>Page</b>
Bernalillo County patient encounters by funding source	<b>3</b>
Financial assistance to patients by county	<b>4</b>
UNM Care and UNMCI enrollment and numbers assigned to First Choice	<b>5</b>
Emergency room data on patients leaving without being seen and average hours from arrival to disposition	<b>6</b>
Number of FTE's and retention rate for RN, pharmacy, pulmonary, physical therapist and radiology technicians	<b>7</b>
Quarterly statement of net assets	<b>8</b>
Quarterly statement of revenues, expenses and changes in net assets	<b>9</b>
A Number of indigent Bernalillo County resident <i>outpatients</i> broken out by zip code and the cost of care for such patients	<b>10</b>
B Number of indigent Bernalillo County resident <i>inpatients</i> broken out by zip code and the cost of care for such patients	<b>10</b>
C Primary Services provided to Bernalillo County residents by primary service type	<b>11</b>
D Primary reasons for Bernalillo County indigent resident visits	<b>12</b>
E Emergency room wait times for Bernalillo County residents	<b>10</b>
G Number of County residents applying for and approved for financial assistance	<b>13</b>
UH and Behavioral Statistics	<b>14</b>
2015 Revenue by Payor	<b>15</b>
2015 Mill Levy Expense	<b>16</b>
2015 Mill Levy Expense by Specialty	<b>17</b>
2015 Mill Levy Expense - Behavioral Only	<b>18</b>
Financial Assistance Enrollment Trends	<b>19</b>

**Encounters - Bernalillo County  
 For the six months ended December 31, 2015**

Source	Bernalillo County Encounters
Charity Care - Bernalillo County	3,647
EMSA	346
IHS	924
Medicaid	153,116
Medicare	91,590
Uninsured	16,554
HMO's & Insurance	82,547
All Other	19,905
<b>Total Encounters</b>	<b>368,629</b>

**Native American Encounters** **32,627**

Encounters - Bernalillo County consist of Inpatients and Outpatients who provided a Bernalillo County zip code during their registration. Categories are based on Primary Payer Code. Native American Encounters are based on race as provided during registration, are not restricted to only Bernalillo County zip codes and could be duplicate of the Bernalillo encounters by payer above.

**Financial Assistance to Patients by County\***  
**For the six months ended December 31, 2015**

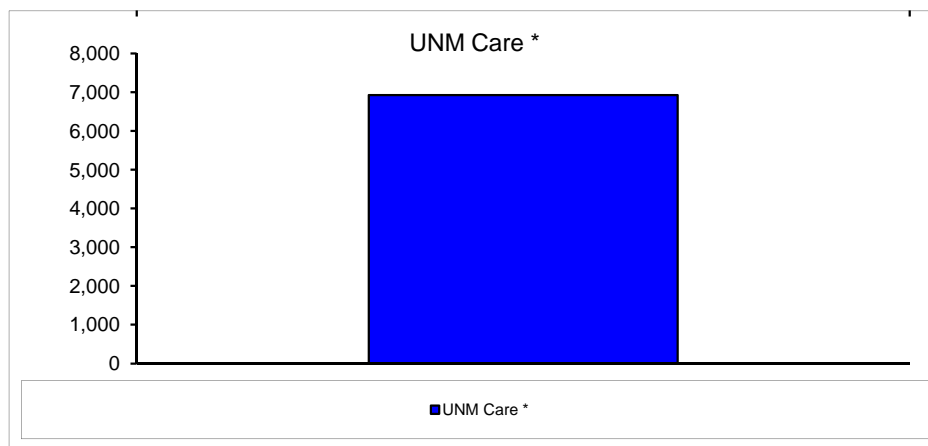
<b>County</b>	<b>Charity Care Cost</b>	<b>Uninsured Cost</b>	<b>Total Uncompensated Care Cost</b>
Bernalillo	23,494,481	\$ 13,263,637	\$ 36,758,118
Catron	11,608	-	11,608
Chaves	1,789	60,741	62,530
Cibola	16,979	221,256	238,234
Colfax	2,873	22,280	25,153
Curry	2,843	73,408	76,251
De Baca	191	-	191
Dona Ana	4,737	22,345	27,082
Eddy	26,541	140,035	166,576
Grant	13	28,581	28,593
Guadalupe	636	27,702	28,338
Harding	-	-	-
Hidalgo	-	-	-
Lea	77,061	65,272	142,334
Lincoln	426	12,818	13,244
Los Alamos	-	3,466	3,466
Luna	32,709	3,012	35,721
Mc Kinley	196	139,317	139,513
Mora	-	-	-
Otero	19,388	-	19,388
Quay	-	516	516
Rio Arriba	1,611	52,629	54,240
Roosevelt	-	30,423	30,423
San Juan	1,326	130,023	131,349
San Miguel	1,949	15,893	17,842
Sandoval	92,471	628,433	720,904
Santa Fe	20,909	191,436	212,344
Sierra	48,422	2,262	50,684
Socorro	2,002	37,574	39,576
Taos	231,292	188,232	419,523
Torrance	20,963	154,400	175,364
Union	-	57,279	57,279
Valencia	189,226	1,017,960	1,207,185
Out Of State	-	840,061	840,061
<b>Grand Total</b>	<b>\$ 24,302,641</b>	<b>\$ 17,430,989</b>	<b>\$ 41,733,630</b>

\* Based on collection

Total Uncompensated Care Cost: Cost of care for UNM Hospitals is the actual cost of providing care - salary, benefits, supplies, drugs, blood, organs, utilities, depreciation, contracts, services.

**UNM Care  
 As of December 2015**

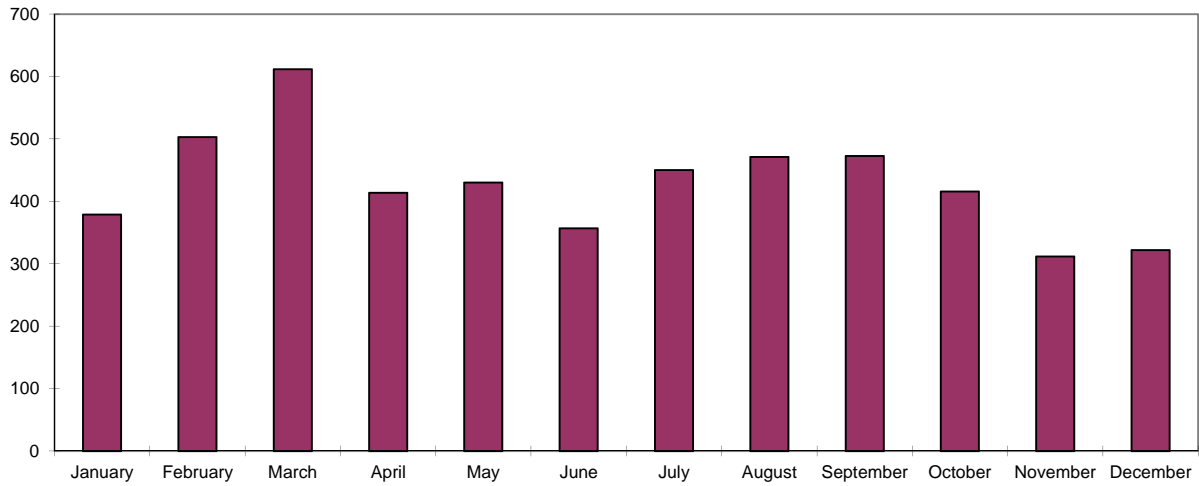
Category	Enrollment
UNM Care *	6,925



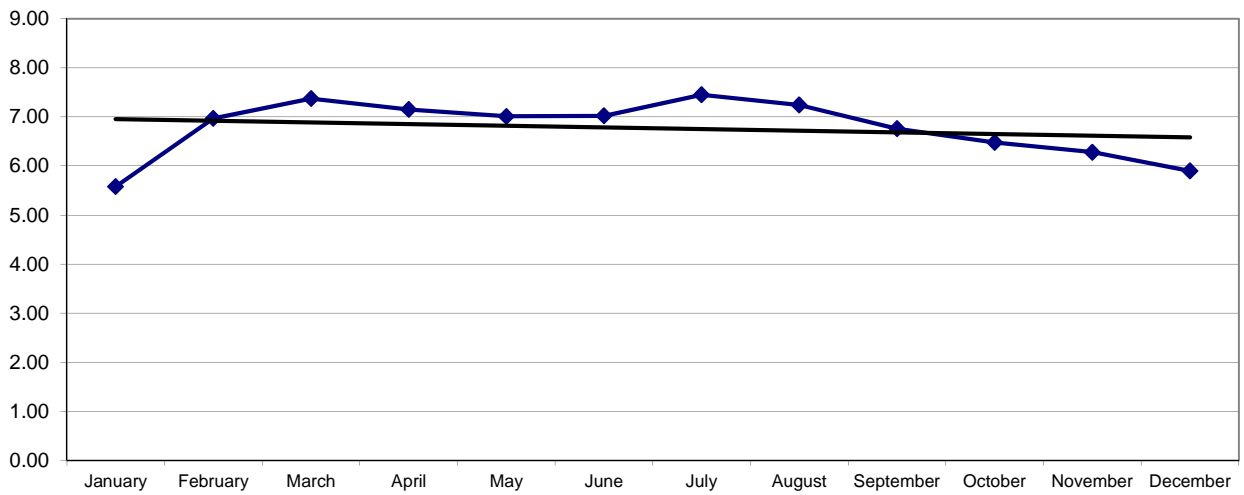
\* UNM Care includes 182 Native American Enrollees as of 12/31/2015.

**Emergency Services  
 For the Twelve months ending December 31, 2015**

**Patients left without being seen**



**Average Hours from Arrival to Disposition**





**Number of FTE's and Retention Report  
For the six months ended December 31, 2015**

<b>Category</b>	<b>Number of FTE's as of June 2015</b>	<b>Number of FTE's as of December 2015</b>	<b>Hires Headcount</b>	<b>Terms Headcount</b>	<b>Rolling Retention Rate</b>
<b>RN's</b>	1,867	1,928	151	135	86.25%
<b>Pharmacy</b>	167	191	24	16	78.67%
<b>Pulmonary</b>	71	81	1	3	92.73%
<b>Physical Therapists</b>	48	61	3	-	98.30%
<b>Radiology Techs</b>	140	137	10	9	87.75%

NOTE: The number of FTE's for selected categories is listed above; however, it should be noted that the retention rate is calculated using the hires and terms for each respective category.

**UNM HOSPITALS**

Statements of Net Assets

December 31, 2015 and June 30, 2015

<b>Assets</b>	<b>December 2015</b>	<b>June 2015</b>
<i>(In Thousands)</i>		
<b>Current assets:</b>		
Cash and cash equivalents	\$ 143,640	146,491
Marketable securities	34,461	34,558
Receivables:		
Patient, net	142,925	134,264
University of New Mexico	654	780
Estimated third-party payor settlements	21,295	37,259
Bernalillo County treasurer	25,533	1,668
Other	26,620	21,378
Total current assets	<u>395,128</u>	<u>376,398</u>
<b>Noncurrent assets:</b>		
Assets whose use is limited:		
Held by trustee	16,052	15,072
By UNM Hospital Clinical Operations Board	20,776	21,453
Capital assets, net	239,730	239,294
Total assets	<u>671,686</u>	<u>652,217</u>
 <b>Liabilities</b>		
<b>Current liabilities:</b>		
Accounts payable	55,203	49,723
Payable to University of New Mexico	54,408	71,056
Estimated third-party payor settlements	62,439	34,795
Interest payable bonds	89	427
Other accrued liabilities	43,481	53,775
Total current liabilities	<u>215,620</u>	<u>209,776</u>
Bonds payable	121,126	115,000
Total liabilities	<u>336,746</u>	<u>324,776</u>
 <b>Net Assets</b>		
Restricted for expendable grants, bequests, and contributions	15,666	14,980
Restricted for trust indenture and debt agreement	19,410	14,347
Unrestricted Total net assets	175,134	173,820
Assets invested in capital	124,730	124,294
Total net assets	<u>\$ 334,940</u>	<u>\$ 327,441</u>



**UNM HOSPITALS**

Statements of Revenues, Expenses, and Changes in Net Assets

For the six months ended December 31, 2015

<i>(In Thousands)</i>	<b>December 2015</b>	<b>June 2015</b>
Operating revenues:		
Net patient service	\$ 428,509	911,755
Other	12,265	26,407
Total operating revenues	<u>440,774</u>	<u>938,162</u>
Operating expenses:		
Employee Compensation and Benefits	226,110	430,779
Medical services	93,205	164,259
Medical supplies	78,281	141,718
Occupancy/Equipment/Depreciation	44,772	90,316
Purchased services	29,298	54,717
Other	13,518	22,598
Total operating expenses	<u>485,184</u>	<u>904,387</u>
Operating loss	<u>(44,410)</u>	<u>33,775</u>
Nonoperating revenues (expenses):		
Bernalillo County Mill Levy	46,608	93,249
State appropriation	6,279	12,526
Investment income (dividends, gains and losses)	(681)	15,908
Interest Expense	(1,583)	(6,868)
Other Expense	(857)	(131,168)
Land and Permanent Fund	423	820
Bequests and contributions	1,720	2,578
Net nonoperating revenues	<u>51,909</u>	<u>(12,955)</u>
Increase in net assets	7,499	20,820
Net assets, beginning of year	327,441	306,621
Net assets, end of year	\$ <u><u>334,940</u></u>	<u><u>327,441</u></u>

**Financial Assistance to Bernalillo County Patients by Zip Code**

For the six months ended December 31, 2015

A - Number of Indigent Bernalillo County resident outpatients by zip code and cost of care

B - Number of Indigent Bernalillo County resident inpatients by zip code and cost of care

F - Total cost of care for Bernalillo County indigent patients by zip code with cost methodology

Bernalillo County Zip	Inpatient Count	Inpatient Charity Care and Unisured Cost	Outpatient Count	Outpatient Charity Care and Unisured Cost	Total Patient Count	Total Patient Charity Care and Unisured Cost
87008	1	\$ 6,442	76	\$ 23,815	77	\$ 30,257
87022	2	15,632	149	27,631	151	43,263
87047	3	20,575	112	74,643	115	95,218
87059	20	231,310	275	240,138	295	471,448
87101	2	20,374	20	13,776	22	34,150
87102	81	494,492	2,260	1,550,227	2,341	2,044,718
87103	1	-	49	22,397	50	22,397
87104	30	269,506	1,015	729,790	1,045	999,296
87105	191	1,752,326	7,665	3,636,062	7,856	5,388,388
87106	53	278,575	1,729	567,449	1,782	846,024
87107	80	636,007	2,332	1,416,401	2,412	2,052,408
87108	169	1,602,266	4,445	2,588,691	4,614	4,190,957
87109	75	715,368	1,883	1,196,989	1,958	1,912,356
87110	73	375,547	2,148	1,063,963	2,221	1,439,510
87111	40	576,990	1,515	1,018,577	1,555	1,595,566
87112	61	261,199	2,223	1,411,111	2,284	1,672,310
87113	20	241,239	537	272,819	557	514,058
87114	47	155,575	1,691	894,775	1,738	1,050,350
87115	-	-	4	419	4	419
87116	3	3,000	27	50,082	30	53,082
87117	-	-	1	510	1	510
87119	-	-	25	3,623	25	3,623
87120	70	302,869	2,071	945,885	2,141	1,248,754
87121	200	2,090,756	6,875	4,482,857	7,075	6,573,613
87122	4	773	269	131,421	273	132,194
87123	79	908,495	2,985	1,780,691	3,064	2,689,185
87125	6	64,342	171	117,101	177	181,444
87131	1	3,572	22	79,123	23	82,695
87151	4	390,692	26	4,400	30	395,092
87153	-	-	11	11,728	11	11,728
87154	-	-	40	37,857	40	37,857
87158	-	-	-	-	-	-
87176	-	-	105	28,009	105	28,009
87181	-	-	46	15,651	46	15,651
87184	1	3,247	20	19,172	21	22,419
87185	-	-	4	-	4	-
87187	-	-	6	193	6	193
87190	2	674,623	38	16,397	40	691,019
87191	1	5,608	28	2,790	29	8,398
87192	1	3,247	59	11,836	60	15,083
87193	1	3,247	86	15,354	87	18,601
87194	-	44	38	13,200	38	13,244
87195	2	11,994	89	49,738	91	61,732
87196	2	3,608	38	7,541	40	11,149
87197	2	3,247	61	16,368	63	19,615
87198	-	-	101	9,430	101	9,430
87199	1	5,672	70	25,033	71	30,705
<b>Grand Total</b>	<b>1,329</b>	<b>\$ 12,132,457</b>	<b>43,440</b>	<b>\$ 24,625,661</b>	<b>44,769</b>	<b>\$ 36,758,118</b>

**C - Financial Assistance to Bernalillo County Patients by Service Type**  
For the six months ended December 31, 2015

Bernalillo County Zip	Cancer Count	Medicine Count	Pediatrics Count	Surgery Count	Emergency Medicine Count	Neurology Count	OBGYN Count	Orthopedics Count	Psychiatry Count	Other Count	Total Count
87008	13	35	-	3	5	5	2	5	10	1	79
87022	26	68	-	12	6	9	3	5	20	2	151
87047	5	63	-	2	12	5	7	6	9	7	116
87059	23	165	-	12	12	23	8	4	43	5	295
87101	-	11	-	-	4	-	1	1	5	-	22
87102	116	1,202	5	119	160	130	84	36	448	41	2,341
87103	2	23	1	2	-	7	3	-	10	2	50
87104	47	601	3	55	47	53	43	13	162	21	1,045
87105	325	2,949	16	313	265	342	270	93	1,005	112	5,690
87106	70	910	3	105	96	104	71	58	331	34	1,782
87107	137	1,277	5	130	93	158	112	46	419	35	2,412
87108	179	2,457	9	224	217	256	202	87	884	99	4,614
87109	92	1,060	9	98	136	133	76	44	276	34	1,958
87110	108	1,107	3	103	100	151	69	43	483	54	2,221
87111	136	702	-	82	87	128	50	35	300	35	1,555
87112	103	1,166	6	129	107	151	101	55	422	44	2,284
87113	40	257	1	37	32	35	38	20	79	18	557
87114	152	826	2	100	62	140	68	36	326	26	1,738
87115	-	-	-	-	-	1	-	-	3	-	4
87116	1	16	-	4	2	-	1	2	1	-	27
87117	-	1	-	-	-	-	-	-	-	-	1
87119	-	11	-	1	1	12	-	-	-	-	25
87120	187	1,125	6	112	95	146	60	41	340	29	2,141
87121	415	6,134	22	348	368	432	416	112	812	182	9,241
87122	28	133	-	14	8	15	6	4	59	6	273
87123	177	1,750	10	160	139	174	127	63	414	50	3,064
87125	14	80	-	7	12	21	1	3	33	6	177
87131	-	9	1	-	6	1	-	1	5	-	23
87151	1	9	-	2	3	-	1	2	10	2	30
87153	-	8	-	-	1	-	-	-	2	-	11
87154	4	21	-	5	3	3	2	1	1	-	40
87158	-	-	-	-	-	-	-	-	-	-	-
87176	2	59	-	10	8	6	-	7	13	-	105
87181	2	25	-	6	-	10	1	1	1	-	46
87184	2	12	-	2	-	1	1	-	-	3	21
87185	-	3	-	-	-	-	1	-	-	-	4
87187	2	3	-	-	-	-	-	-	1	-	6
87190	7	26	-	3	-	2	-	1	1	-	40
87191	6	12	-	6	-	2	-	2	1	-	29
87192	7	35	-	2	-	4	-	-	9	3	60
87193	5	50	-	2	5	6	6	9	3	1	87
87194	-	18	-	4	1	7	3	2	3	-	38
87195	11	47	-	10	7	8	-	2	6	-	91
87196	-	25	-	4	-	1	2	-	7	1	40
87197	5	35	-	6	2	4	-	2	9	-	63
87198	4	59	-	9	5	4	2	3	15	-	101
87199	8	37	-	1	1	2	2	2	17	1	71
<b>Grand Total</b>	<b>2,462</b>	<b>24,622</b>	<b>102</b>	<b>2,244</b>	<b>2,108</b>	<b>2,692</b>	<b>1,840</b>	<b>847</b>	<b>6,998</b>	<b>854</b>	<b>44,769</b>

Includes inpatient and outpatient

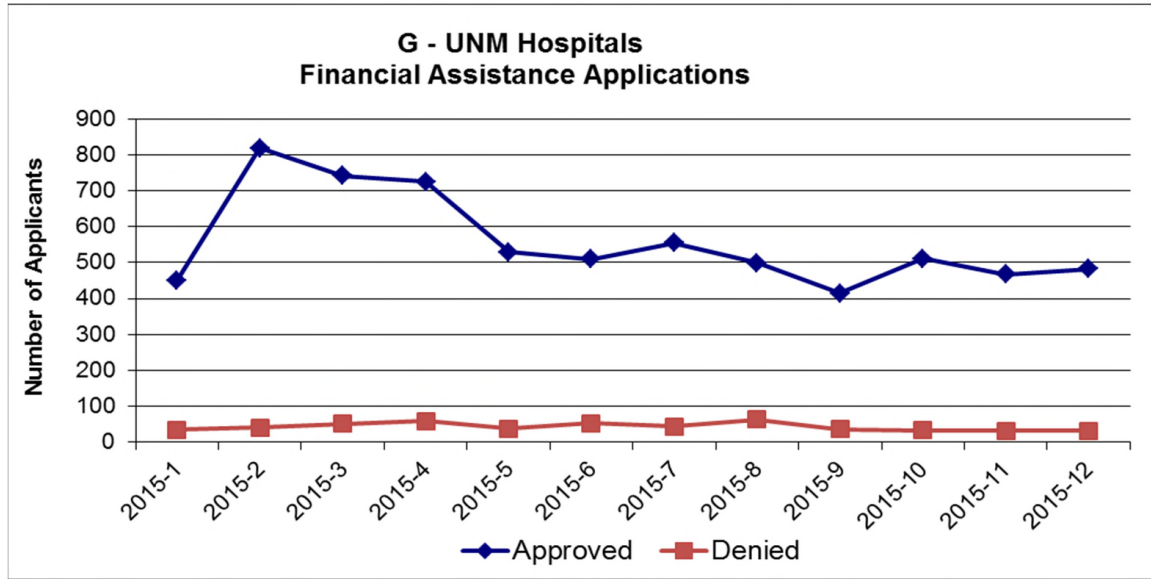
**D - Primary Reason for Bernalillo County Indigent Resident Visits  
For the 18 months ended December 31, 2015**

Description	Count of Visits						Examples of Illnesses
	Q2 FY16	Q1 FY16	Q4 FY15	Q3 FY15	Q2 FY15	Q1 FY15	
Factors Influencing Health Status and Contact with Health Service	2,167	4,635	7,838	4,544	4,121	4,002	Routine exam, follow up to surgery, child and infant wellness checks, etc
Mental Disorders	2,587	3,971	4,344	4,160	2,268	3,836	Alcohol abuse, depression, post traumatic stress disorder
Diseases of Musculoskeletal and Connective Tissue	2,026	2,369	3,136	2,363	2,593	3,579	Joint pain, back pain, pain in limb, arthritis
Signs, Symptoms and Ill-Defined Conditions	1,385	2,294	3,396	1,514	3,053	3,417	Abdominal pain, chest pain, cough, headache, rash, shortness of breath
Diseases of Nervous System and Sense Organs	1,107	1,541	2,457	2,517	2,391	3,021	Sleep Apnea, ear infection, carpal tunnel, diseases of the eye, migraine
Endocrine, Nutritional, and Metabolic Diseases and Immunity Dis	859	1,486	2,506	1,548	1,689	2,423	Diabetes, high blood cholesterol, diseases of thyroid
Injury and Poisoning	717	1,340	1,748	1,769	1,504	2,095	Bone fractures, sprains, wounds, contusions (bruises)
Diseases of Circulatory System	728	1,326	1,775	1,455	1,844	2,036	Hypertension, heart failure, etc.
Neoplasms (abnormal new growth of tissue)	422	1,224	1,789	1,352	1,685	1,979	Cancer, benign growths
Diseases of Genitourinary System	640	1,195	1,652	1,323	1,186	1,858	Urinary tract infection, kidney stones, kidney disease
Diseases of Respiratory System	541	712	1,942	1,197	970	1,375	Sore throat, respiratory infection, sinusitis, asthma, pneumonia
Diseases of Digestive System	391	656	963	939	801	1,337	Esophageal reflux, hernia, diseases of colon, diseases of liver
Complications of Pregnancy, Childbirth, and the Puerperium	77	645	903	589	570	967	
Diseases Skin and Subcutaneous Tissue	388	525	917	657	551	882	Psoriasis, cellulitis and abscess
Infectious and Parasitic Diseases	412	159	359	278	232	428	Hepatitis, viral infections
Diseases of Blood and Blood Forming Organs	88	133	179	127	171	209	Anemia, etc.
Congenital Anomalies	100	76	190	49	58	86	
Newborn (Perinatal)	104	43	121	62	37	47	
Other (prescription pick-up, etc.)	1,679	4,021	4,938	2,582	2,897	3,121	
<b>Total Visits</b>	<b>16,418</b>	<b>28,351</b>	<b>33,315</b>	<b>29,045</b>	<b>28,621</b>	<b>36,698</b>	

Consists of indigent patients who provided a Bernalillo County zip code during their registration. Categories are based on CMS diagnosis codes.



For the twelve months ended December 31, 2015





**UH Statistics**  
FY15 and FY16 as of December 31, 2015

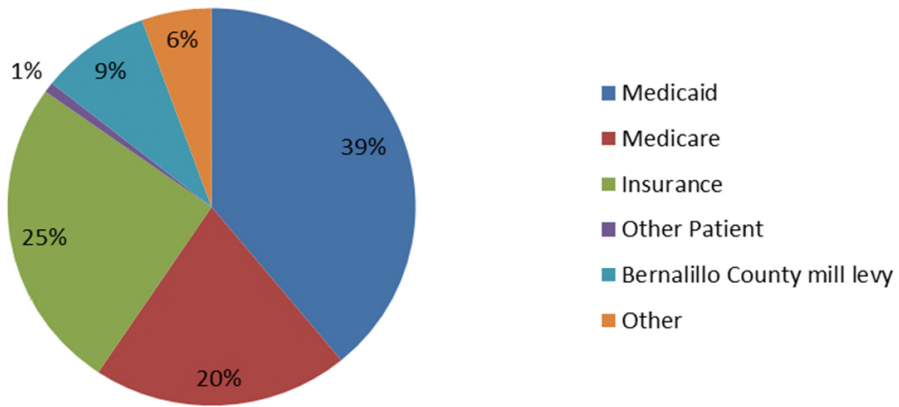
	<b>FY16 Actual</b>	<b>FY15 Actual</b>
<b>Patient Days</b>		
Adult	56,709	113,948
Pediatric	19,108	41,665
Newborn	2,676	4,899
<b>Total Patient Days</b>	<b>78,493</b>	<b>160,512</b>
<b>Other Stats</b>		
<b>Clinic Visits</b>	249,644	488,423
<b>Emergency/Urgent Care</b>	42,458	103,724
<b>Operations</b>	9,898	19,460
<b>Births</b>	1,547	2,979

**Behavioral Statistics**  
FY15 and FY16 as of September 30, 2015

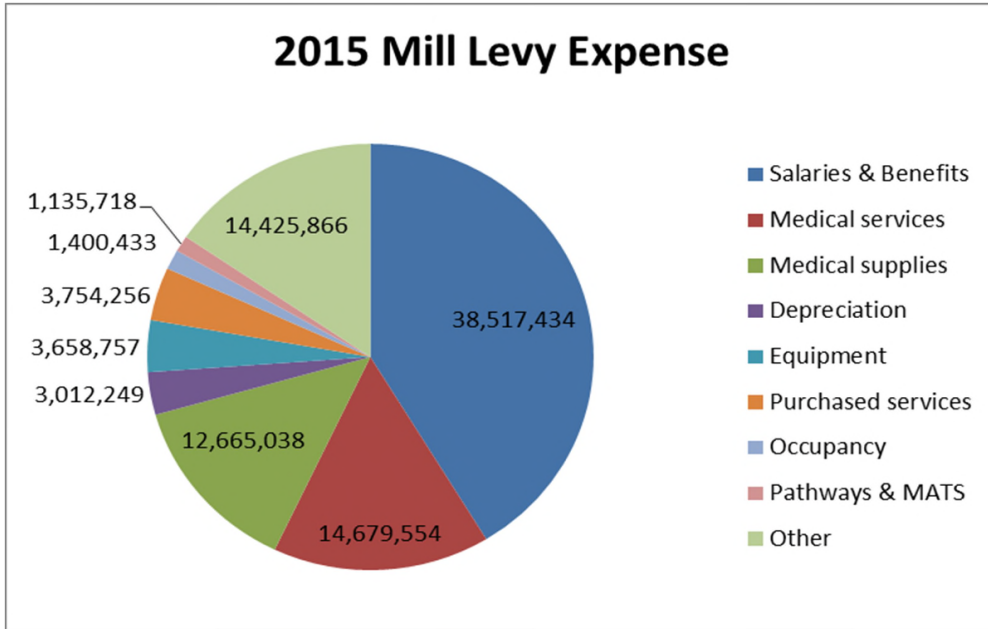
	<b>FY16 Actual</b>	<b>FY15 Actual</b>
<b>Patient Days</b>	11,820	24,126
<b>Other Stats</b>		
<b>Outpatient visits</b>	21,197	40,681
<b>Midlevel</b>	44,855	93,871
<b>Methadone &amp; Buprenorphine</b>	72,455	137,423



### 2015 Revenue



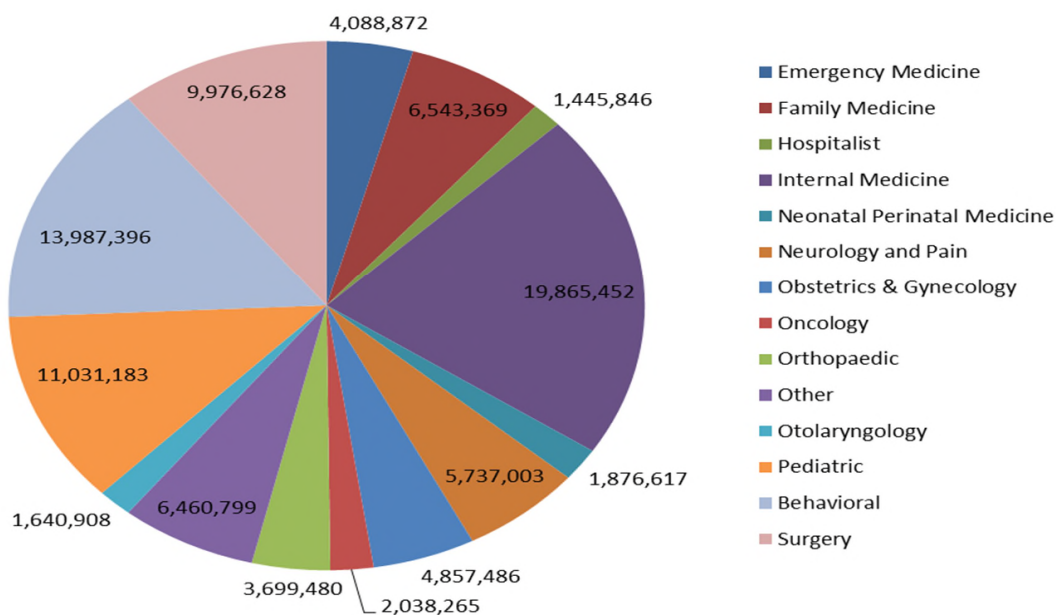
Medicaid	\$ 415,300,727
Medicare	216,408,888
Insurance	271,153,688
Other Patient	8,892,048
Bernalillo County mill levy	93,249,305
Other	59,026,402



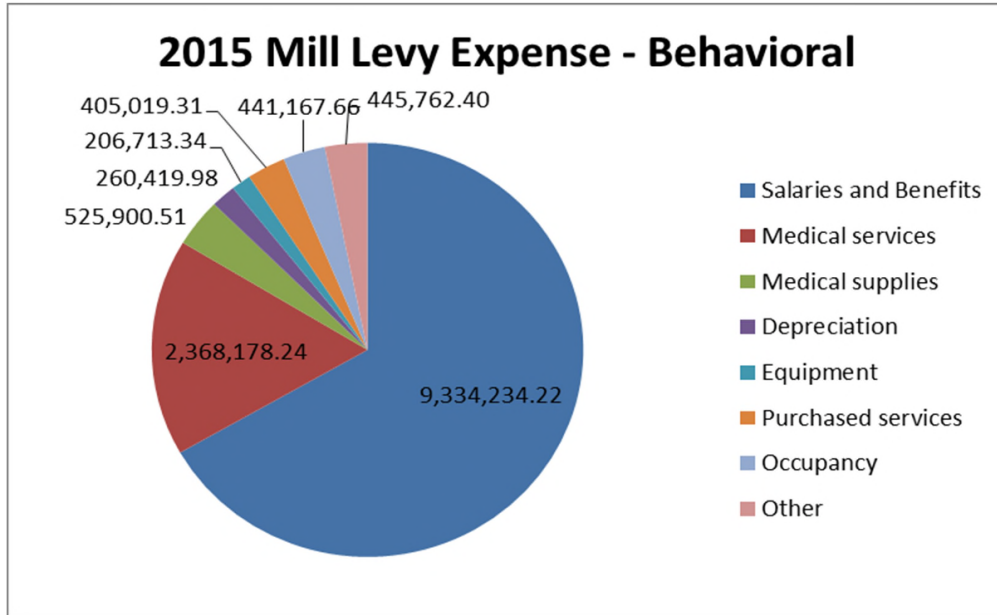
Salaries & Benefits	\$	38,517,434
Medical services		14,679,554
Medical supplies		12,665,038
Depreciation		3,012,249
Equipment		3,658,757
Purchased services		3,754,256
Occupancy		1,400,433
Pathways & MATS		1,135,718
Other		14,425,866
<b>Total Expense</b>	<b>\$</b>	<b>93,249,305</b>



### 2015 Mill Levy Expense by Specialty



Emergency Medicine	\$	4,088,872
Family Medicine		6,543,369
Hospitalist		1,445,846
Internal Medicine		19,865,452
Neonatal Perinatal Medicine		1,876,617
Neurology and Pain		5,737,003
Obstetrics & Gynecology		4,857,486
Oncology		2,038,265
Orthopaedic		3,699,480
Other		6,460,799
Otolaryngology		1,640,908
Pediatric		11,031,183
Behavioral		13,987,396
Surgery		9,976,628
<b>Total</b>	<b>\$</b>	<b>93,249,305</b>



Salaries and Benefits	\$	9,334,234
Medical services		2,368,178
Medical supplies		525,901
Depreciation		260,420
Equipment		206,713
Purchased services		405,019
Occupancy		441,168
Other		445,762
<b>Total Expense</b>	<b>\$</b>	<b>13,987,396</b>

